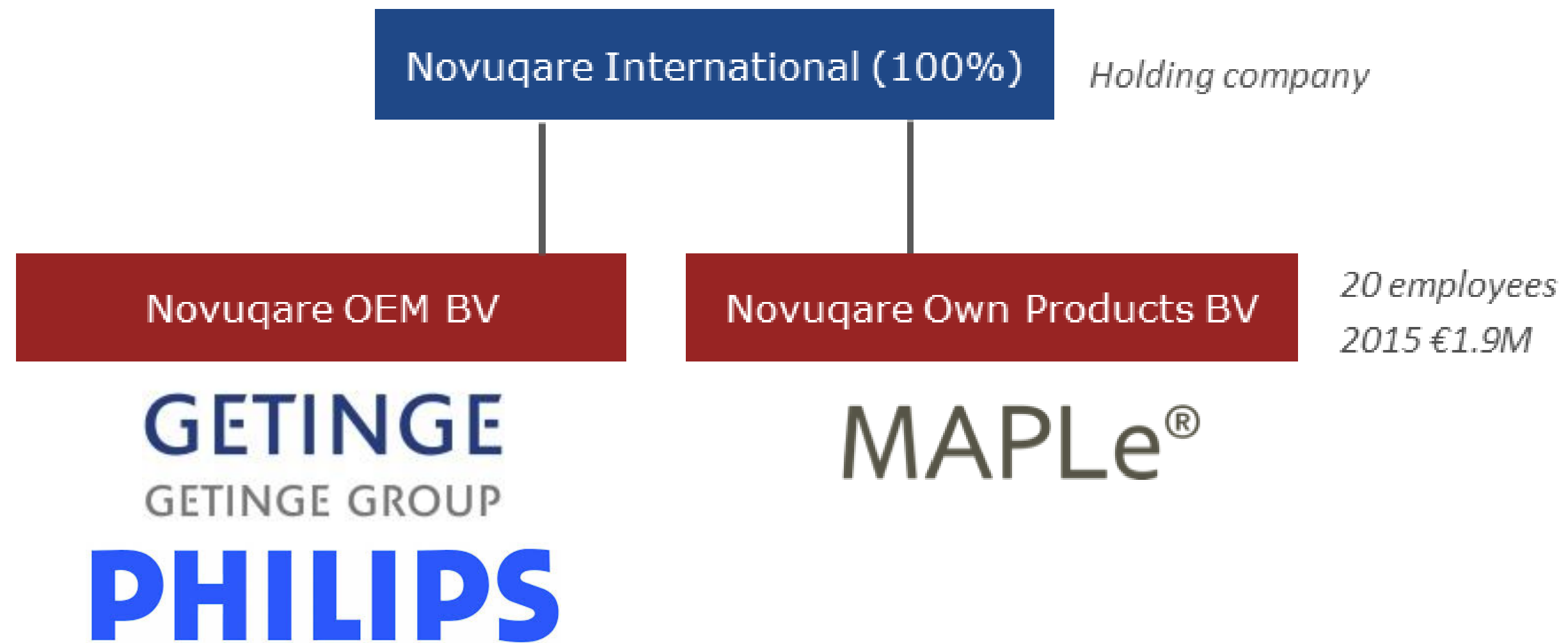


Novuqare®

Innovations for healthier lives.



The company



MAPLe®

CONFIDENTIAL

Novuqare®

MAPLe: the pelvic floor in high definition

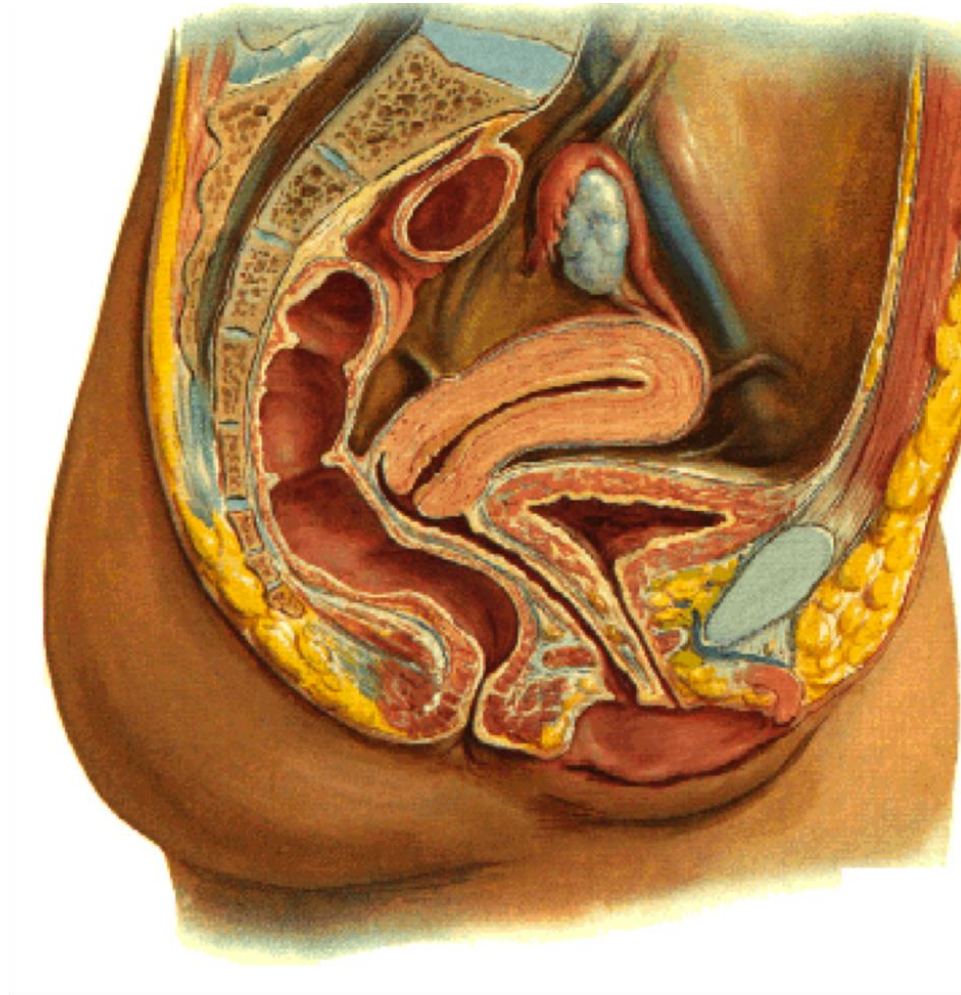


MAPLe®

CONFIDENTIAL

Novuqare®

The pelvic floor has four functions



Sexual

Support

Voiding

Continence

Pelvic Floor dysfunctions in Brazil

Women

- UI: 27% - 32%
- FI: 2% - 7%
- Many more



Men

- UI: 6,2% - 11,8%
- FI: 7%
- Many more

Sources

1. Joao L. Amaro et al. Prevalence and Risk Factors for Urinary and Fecal Incontinence in Brazilian Women, International Braz J Urol, 2009
2. Claudia R. De Souza Santos et al. Prevalence of Urinary Incontinence in a Random Sample of the Urban Population of Pouso Alegre, Minas Gerais, Brazil, Rev. Latino-Am. Enfermagem. 2010
3. José T. Nunes Tamanini et al. Analysis of the prevalence of and factors associated with urinary incontinence among elderly people in the Municipality of São Paulo, Brazil: SABE Study (Health, Wellbeing and Aging). Cad. Saúde Pública, Rio de Janeiro, 2009

Pelvic Floor physiotherapy (Fisioterapia Pélvica)



MAPLe®

CONFIDENTIAL

Novuqare®

Disadvantages current probes



- Not possible to measure/stimulate different sides PFM
- Not possible to measure/stimulate different depths PFM
- Summation of activity of PFM
- No scientific evidence

MAPLe[®]



MAPLe[®]

CONFIDENTIAL

Novuqare[®]

MAPLe: the pelvic floor in high definition

- High Definition 24 point EMG measurement for exact diagnosis and treatment
- Scientifically proven and substantiated
- Easy to operate for diagnosis, biofeedback and electrostimulation
- Targeted local electrostimulation
- Easily maneuverable with freedom of movement

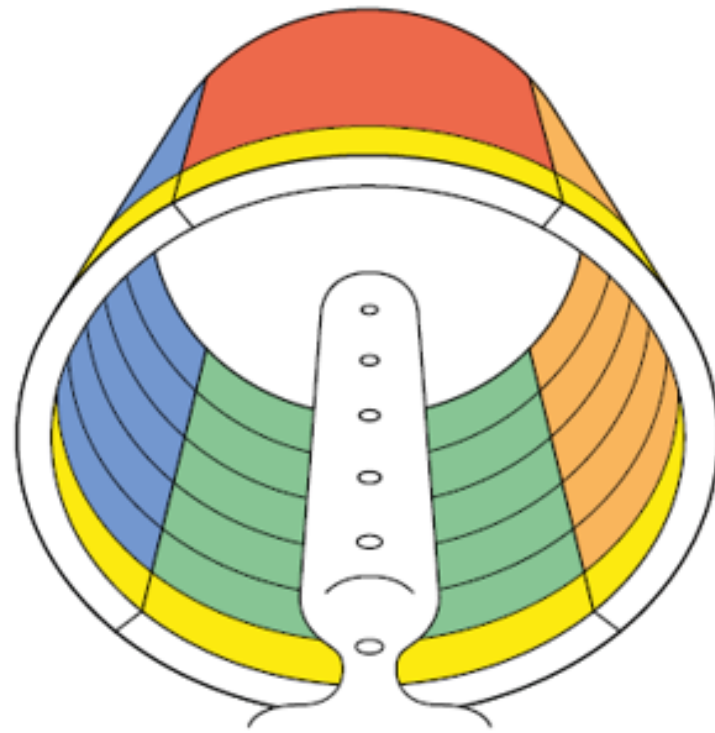


MAPLe®

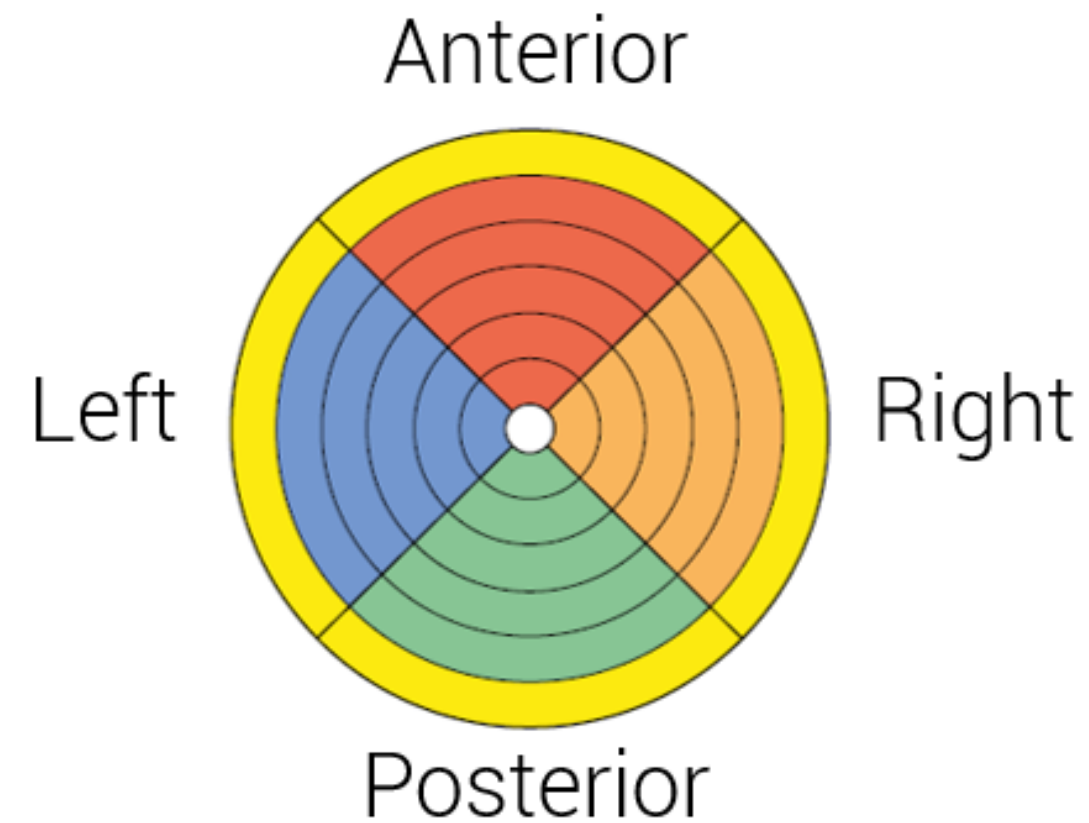
CONFIDENTIAL

Novuqare®

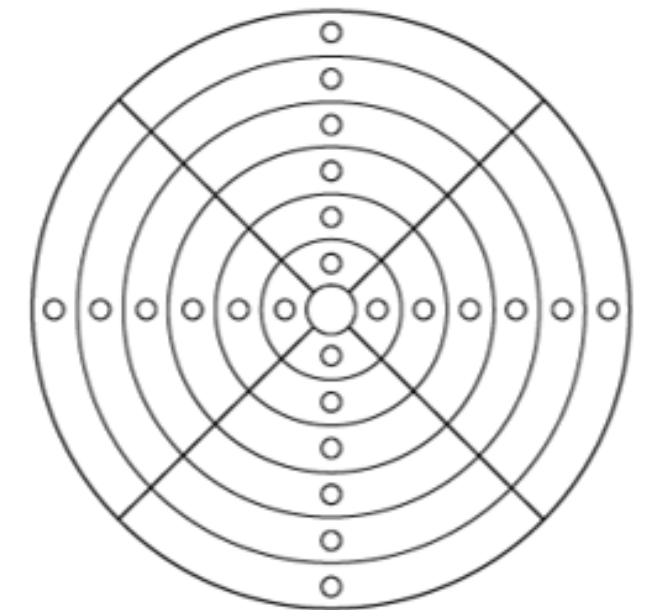
Graphical representation of the electrode location



Tunnel view

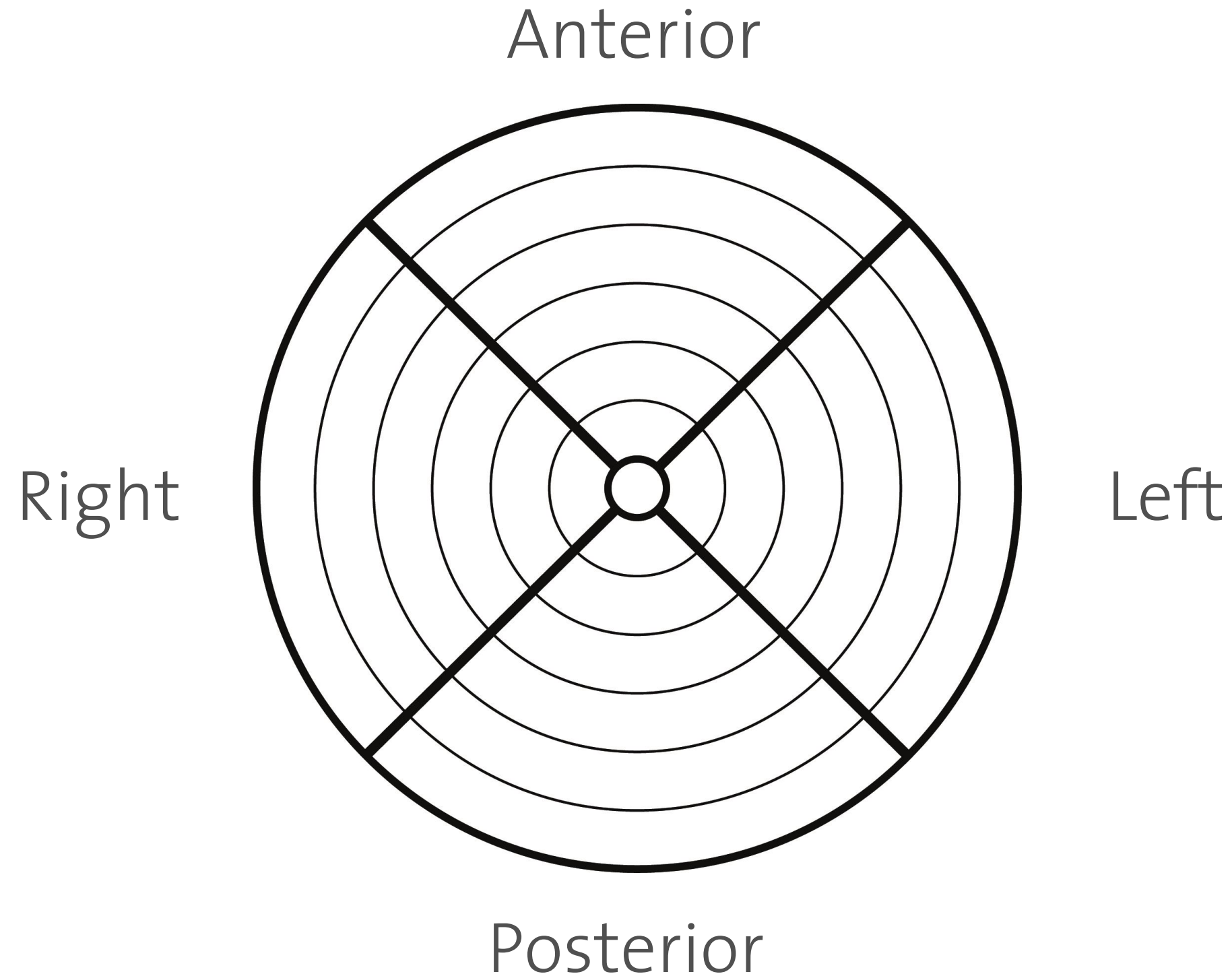


Flat view



Grid + electrodes

Animation of electrode location.



Internal

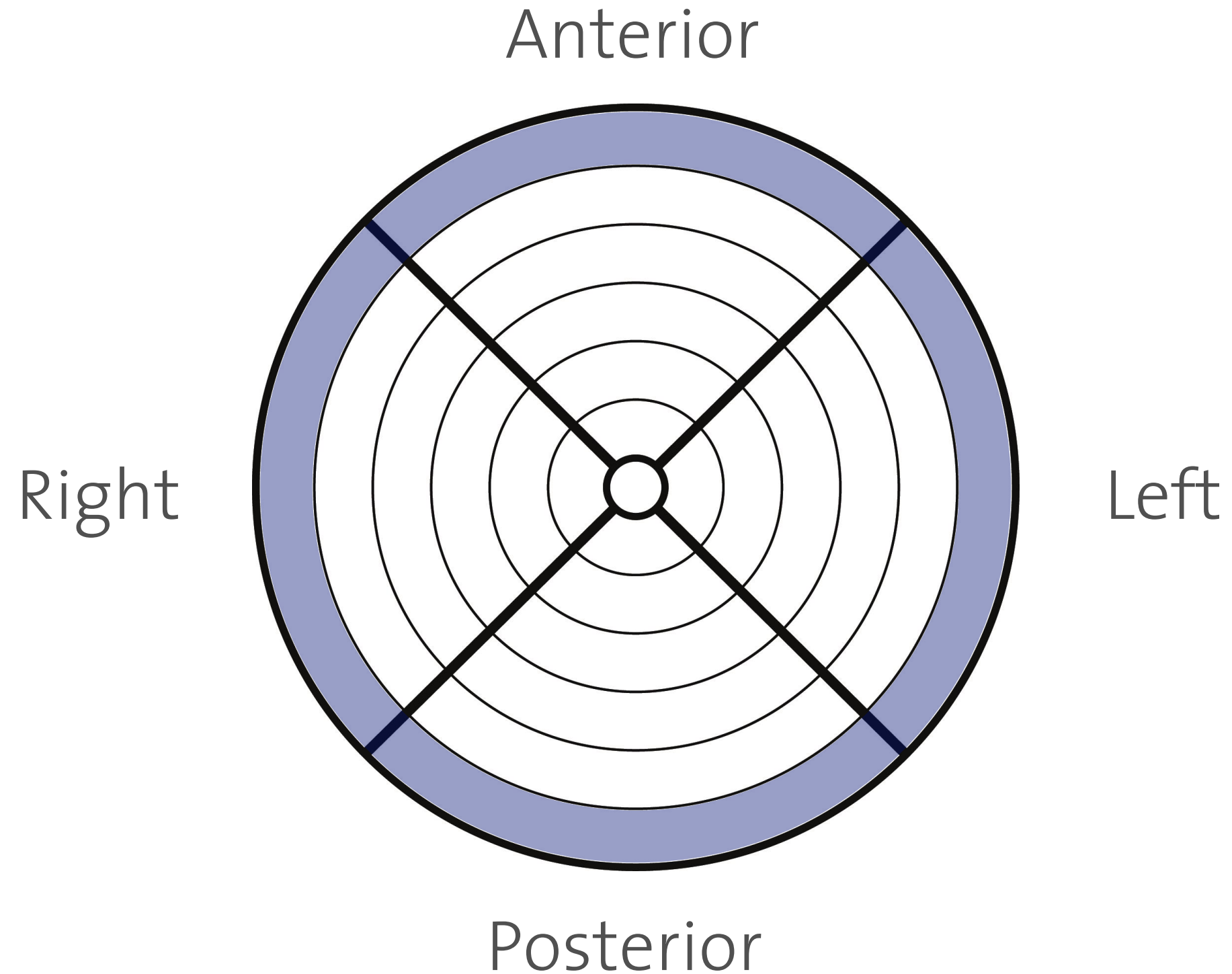
External/
Superficial

MAPLe®

CONFIDENTIAL

Novuqare®

Animation of electrode location.



Internal

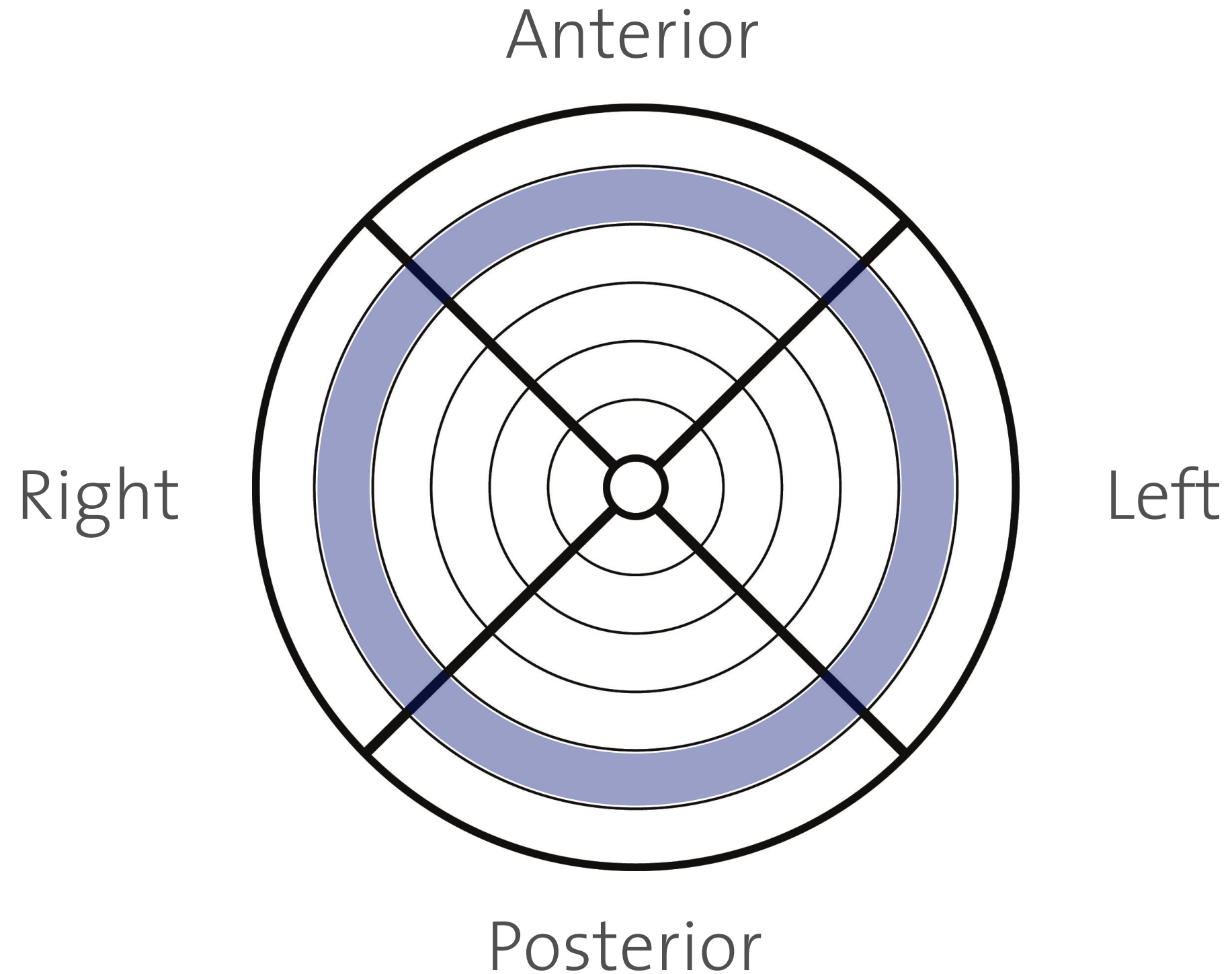
External/
Superficial

MAPLe[®]

CONFIDENTIAL

Novuqare[®]

Animation of electrode location.



Internal

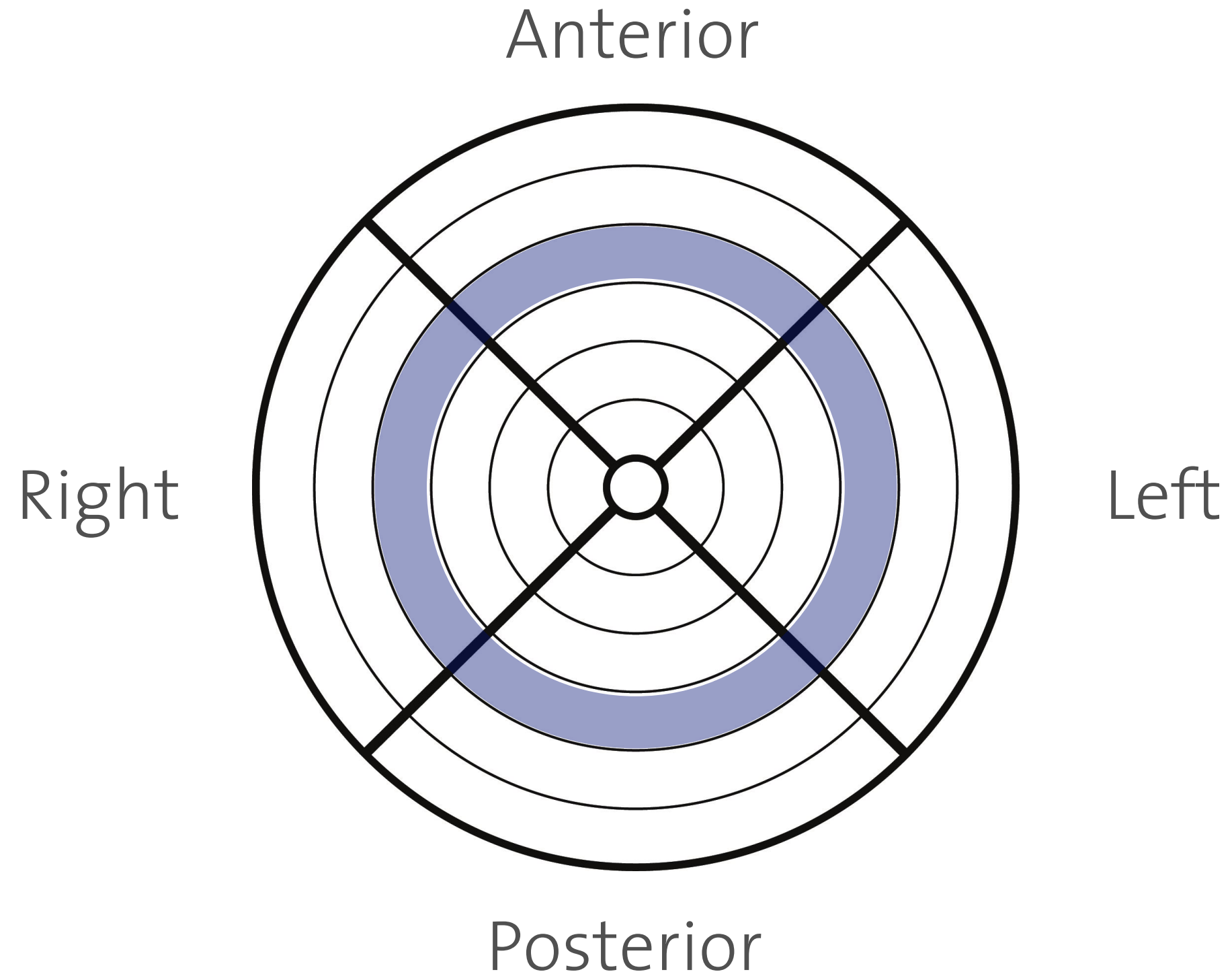
External/
Superficial

MAPLe®

CONFIDENTIAL

Novuqare®

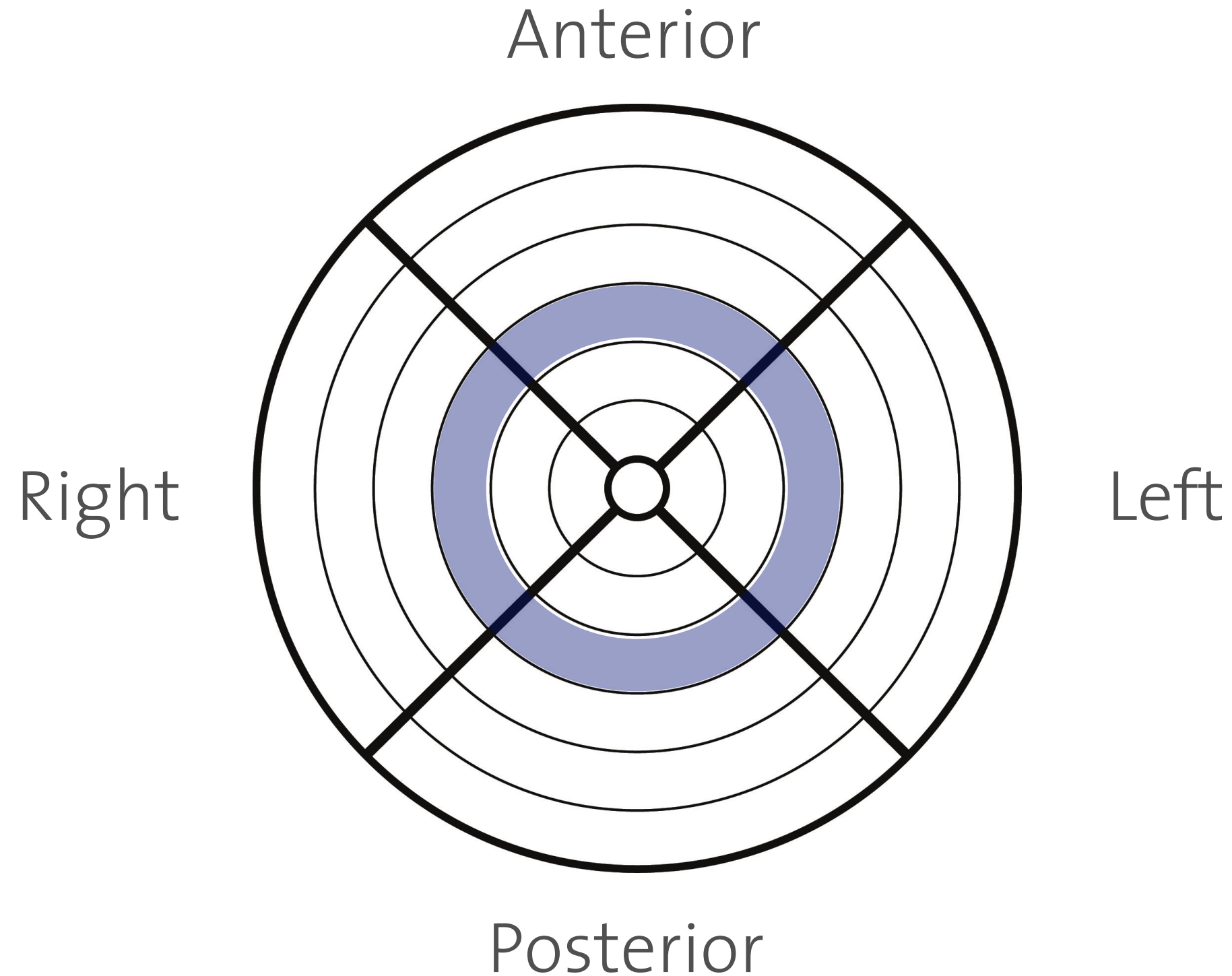
Animation of electrode location.



Internal

External/
Superficial

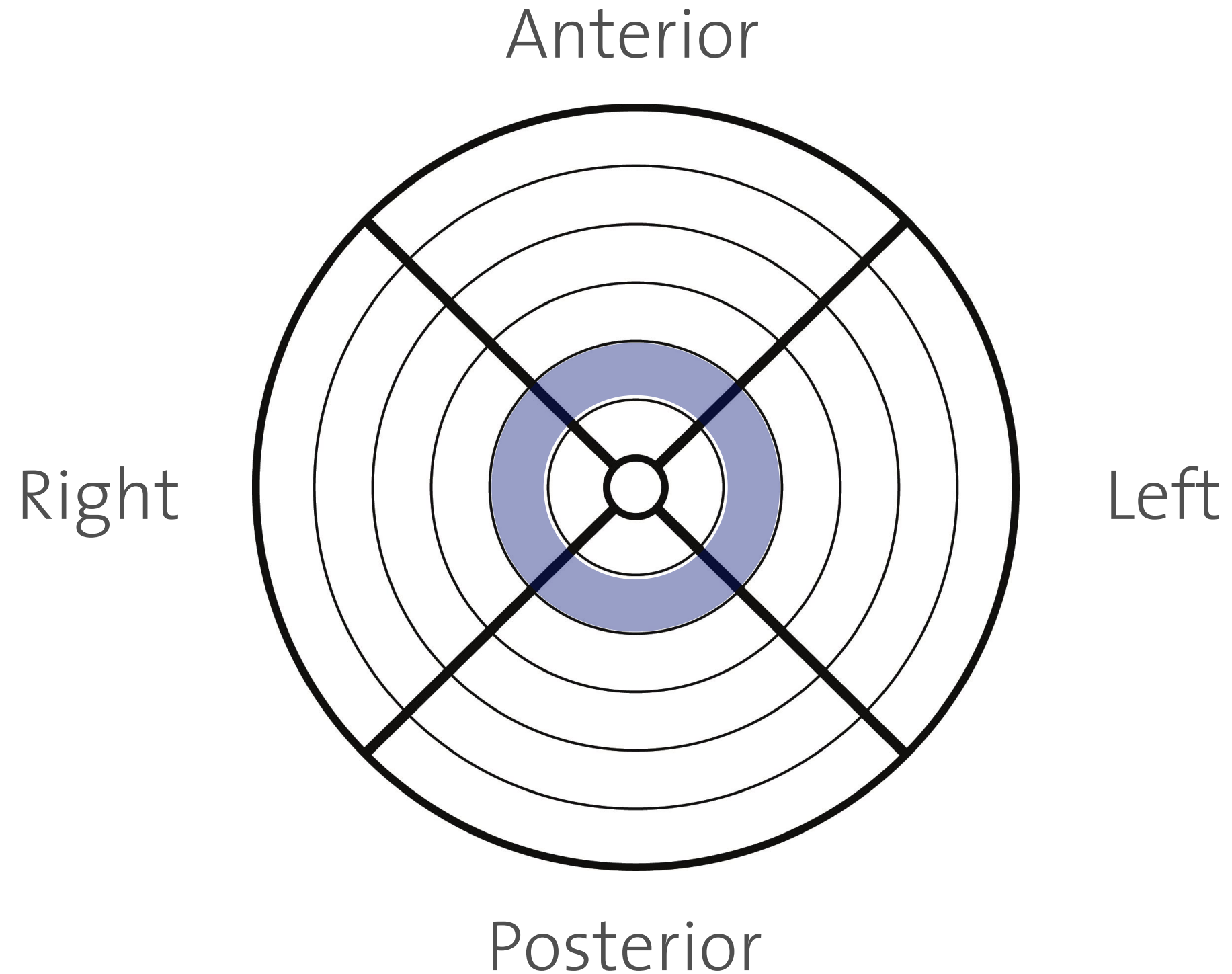
Animation of electrode location.



Internal

External/
Superficial

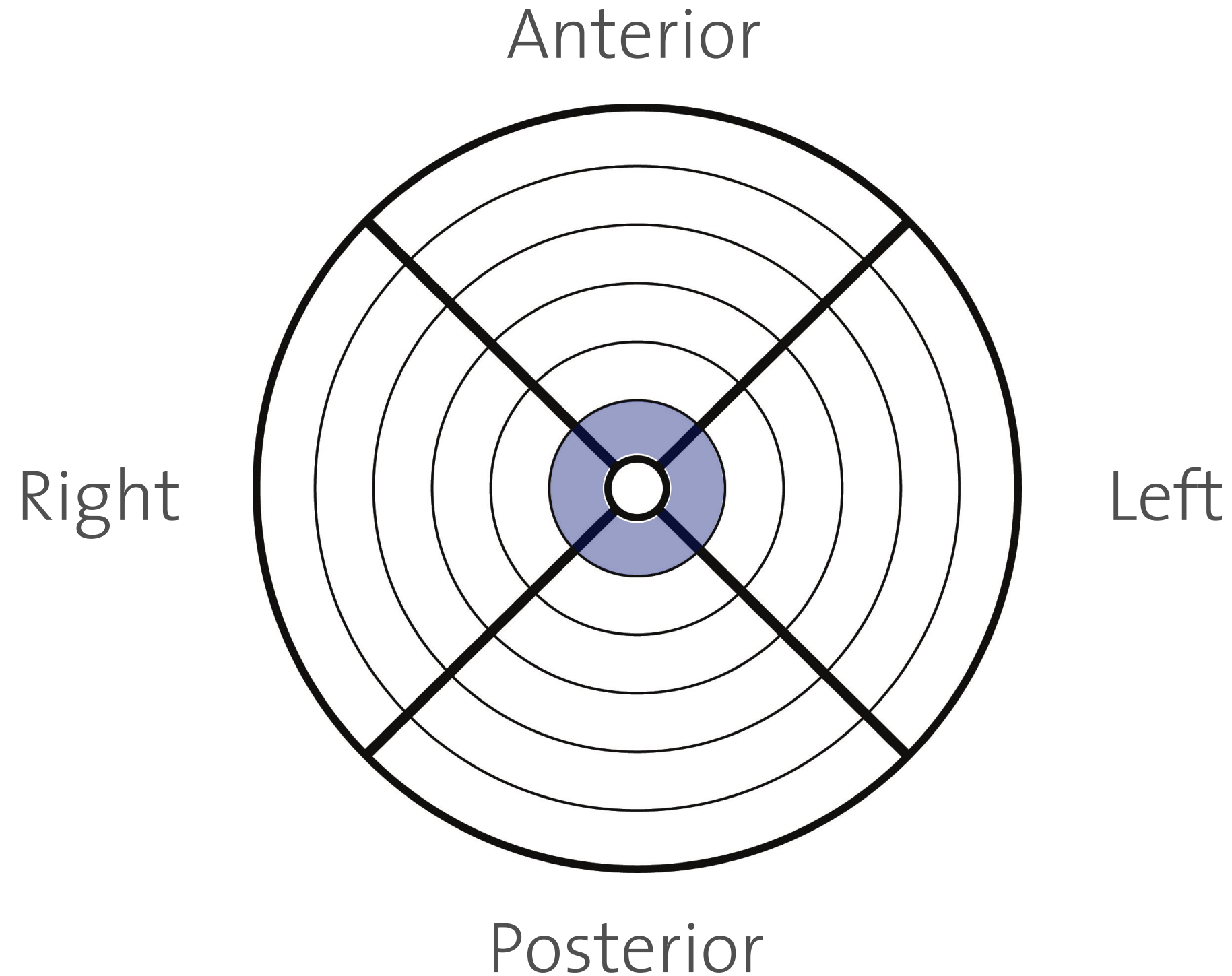
Animation of electrode location.



Internal

External/
Superficial

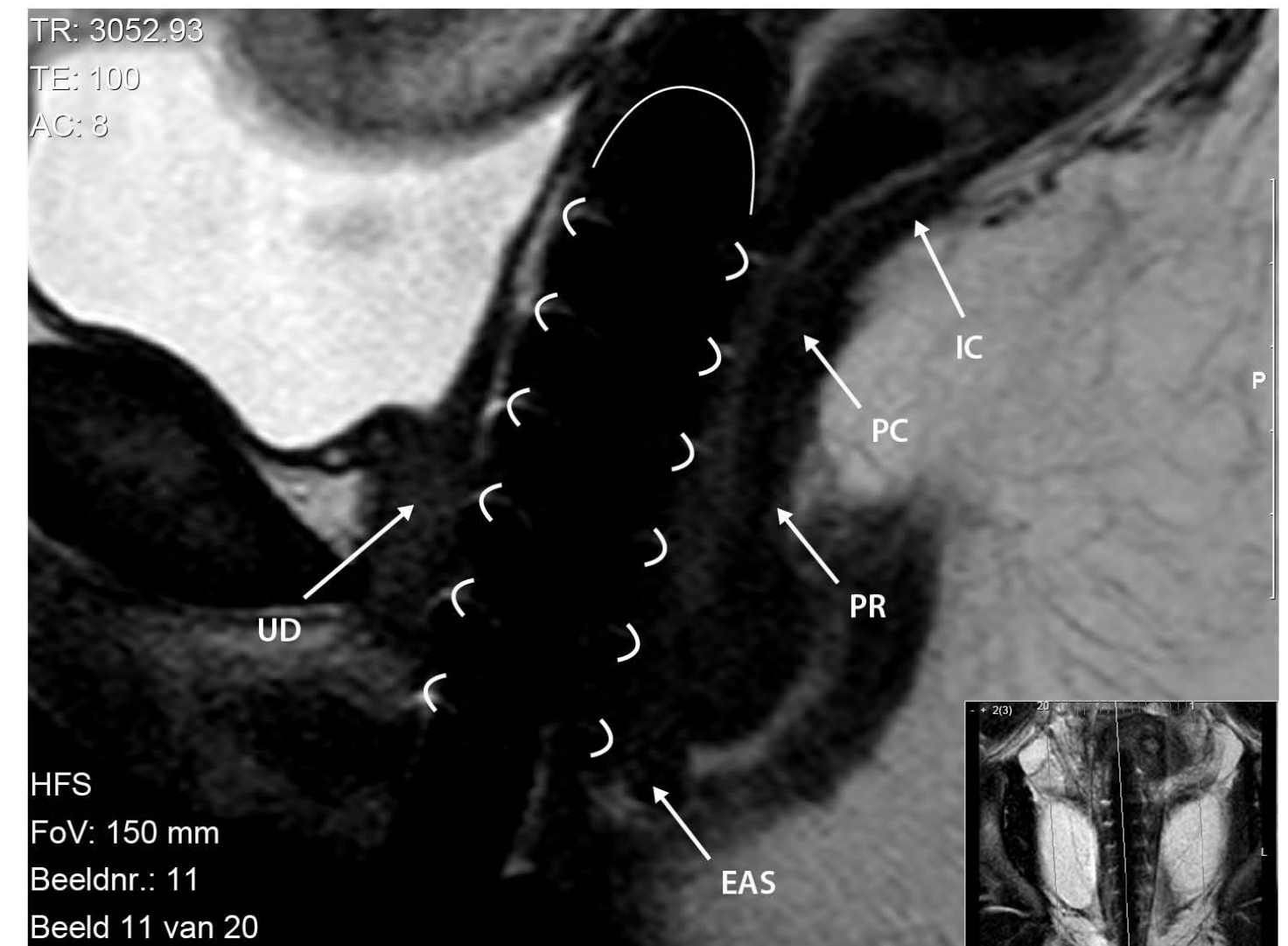
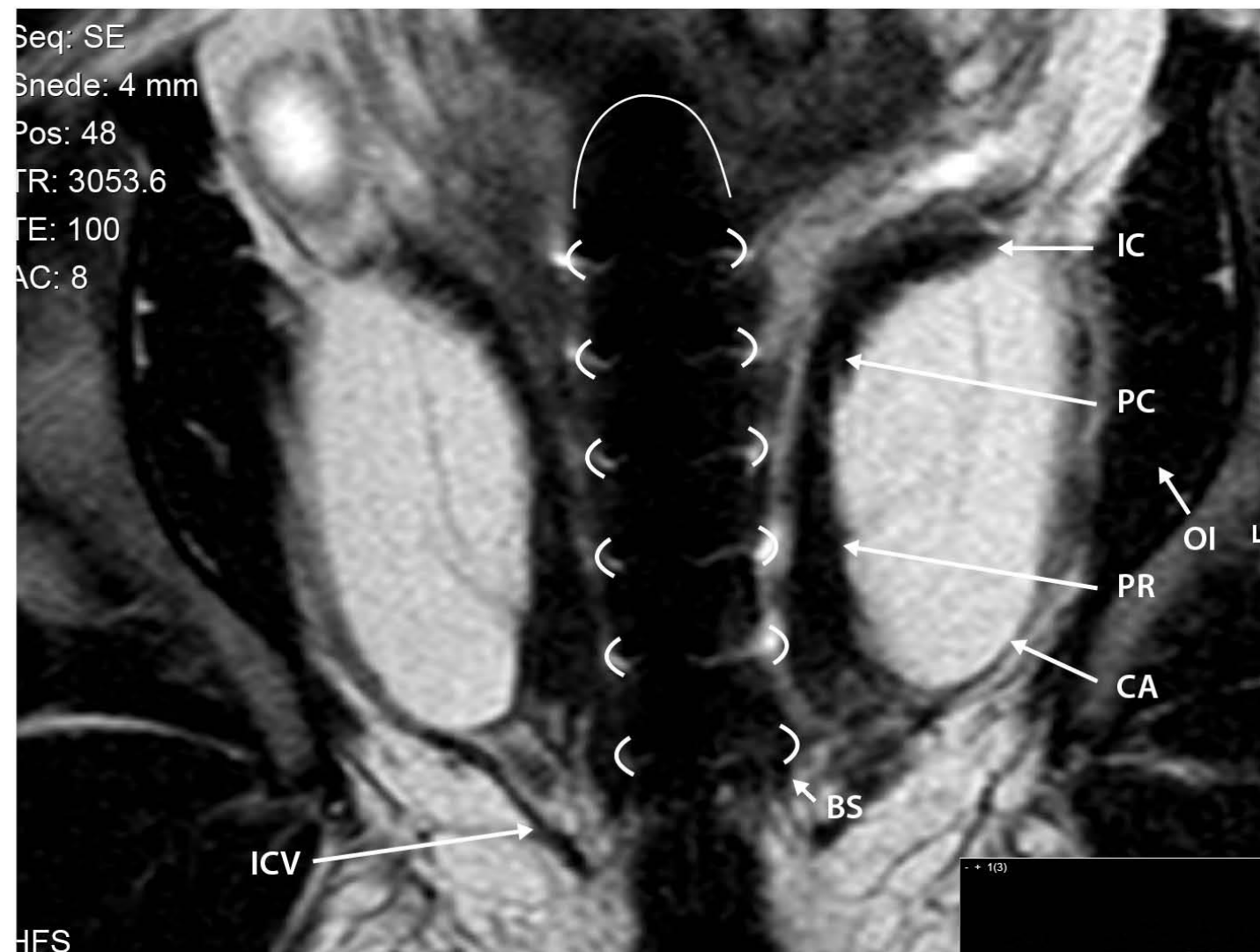
Animation of electrode location.



Internal

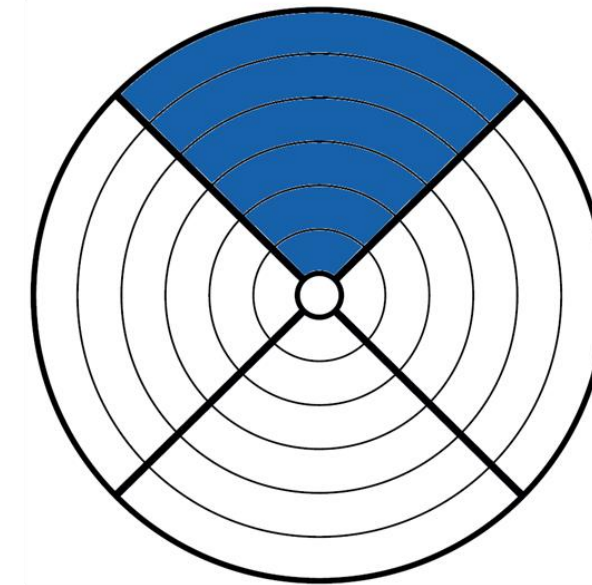
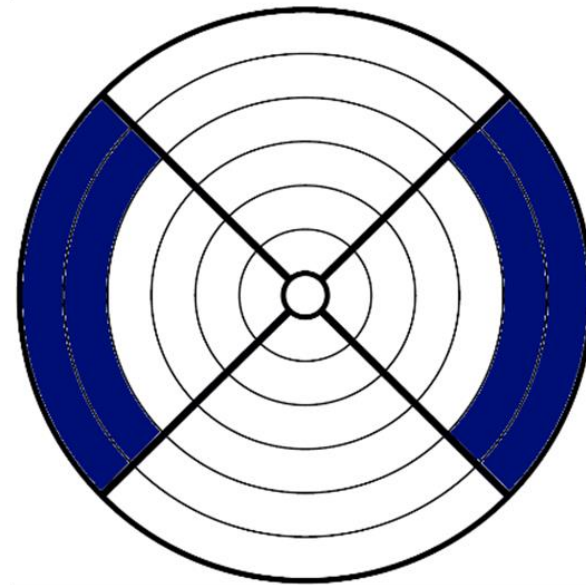
External/
Superficial

Validated in MRI

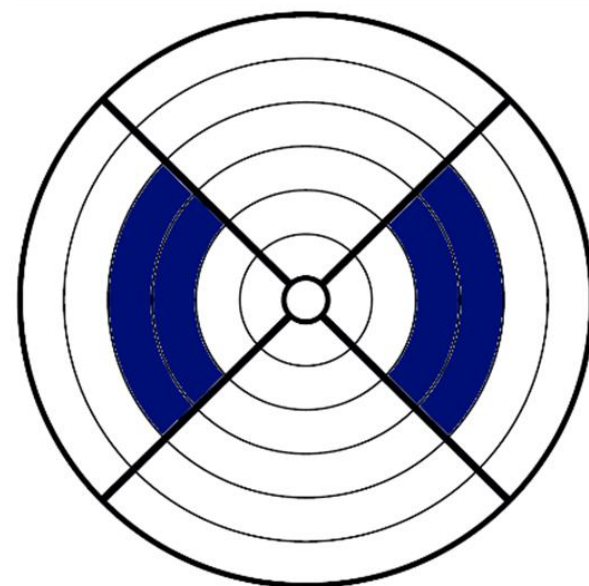


Location of the muscles with respect to grid (vaginal)

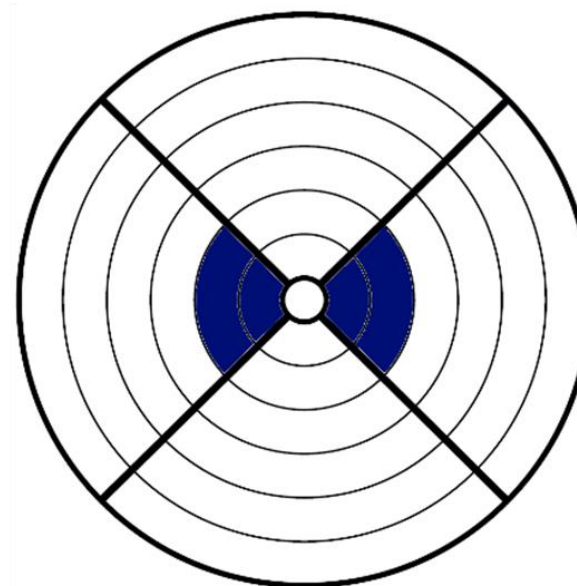
Bulbo spongiosus & Ischiocavernosus Urogenital Diaphragm



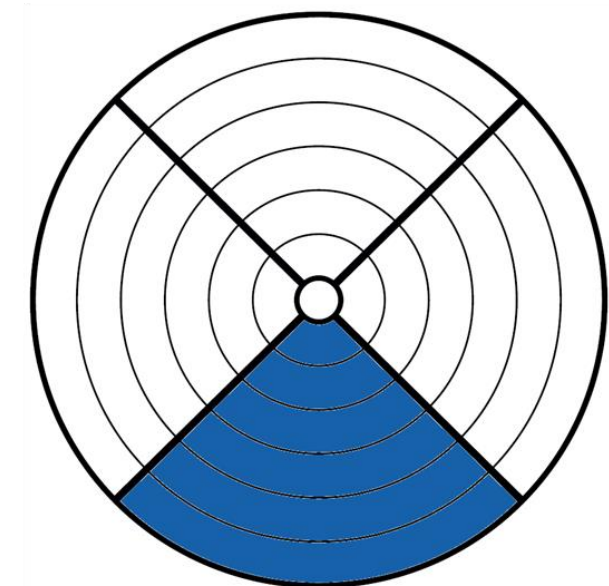
Puborectalis



Pubococcygeus & Iliococcygeus

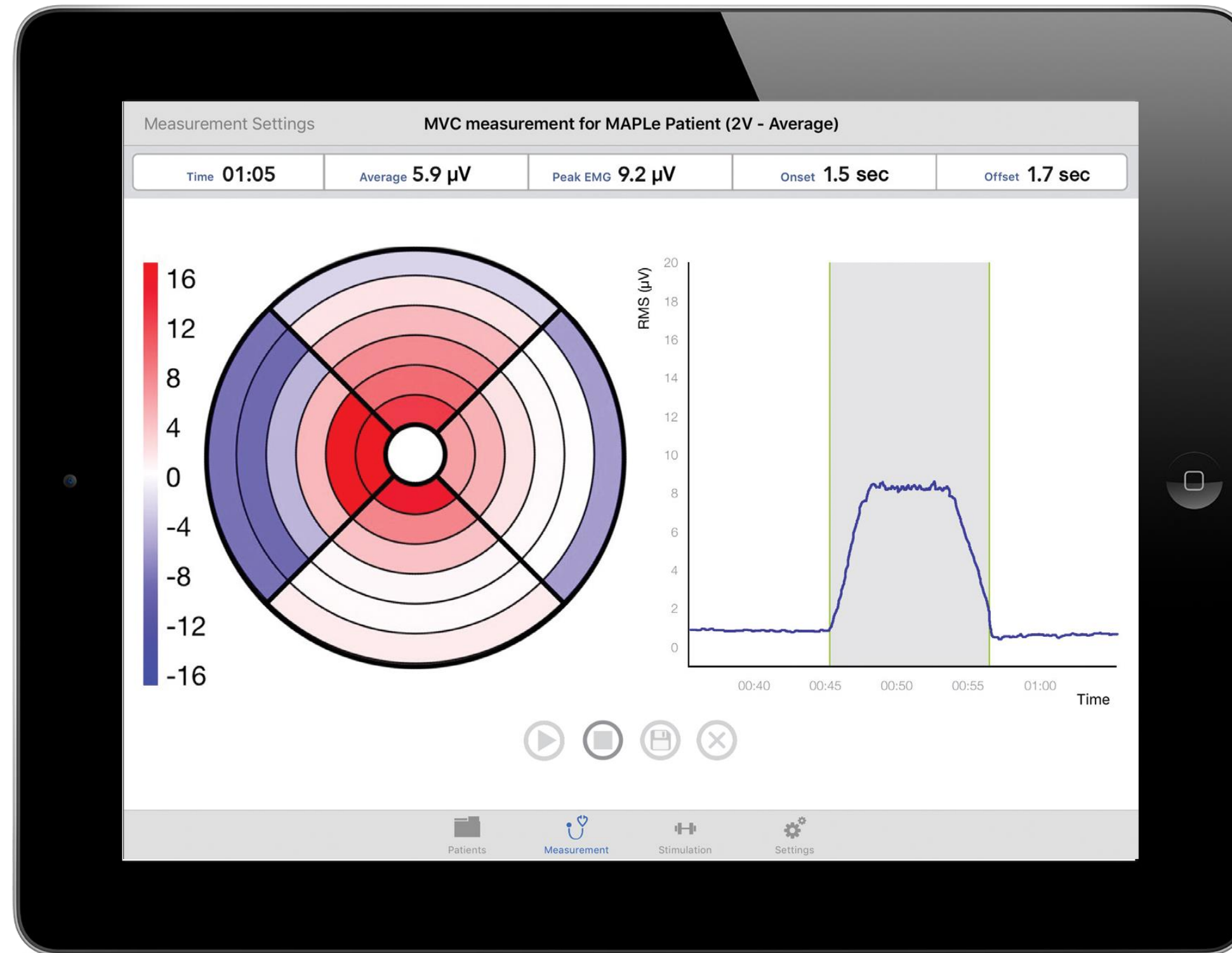


Anal Canal



Source: Voorham-van der Zalm et al. Neurourol Urodyn 2012 Sep 12.

Intuitive diagnosis and feedback



MAPLe[®]

CONFIDENTIAL

Novuqare[®]

The MAPLe is a gamechanger

- Within one year market leader in the Netherlands
 - >25% market share
- Roll out in Europe ongoing

Customer satisfaction

- 100% find EMG and biofeedback better than their old device



What does the market say about the MAPLe?

We are now optimally aware of where the problem lies.

This leads to targeted treatment and good results.

You can't offer your patients any better right now."



Dr. Marijke Sliker, pelvic physiotherapist

What are we looking for?

- We want to start making patient healthy in Brazil
 - Introduction of the MAPLe at Key clinical centers
 - Partner for distribution



MAPLe®

CONFIDENTIAL

Novuqare®