

# Artificial Intelligence for Public Health 2026 AI Training Program

*Strengthening Information Systems for Health and paving the way toward the  
Pan American Highway for Digital Health.*



Registration

**PAHO**





*AI is no longer the future, it is already transforming how we prevent, detect, and respond to health challenges. Understanding AI is becoming a core skill for today's health workforce.*

Phase I - Initial

Foundations of  
AI for Public  
Health

Phase II - Advanced

Mastering AI  
for Public  
Health Impact

Phase III - Specializations

Specialized  
modules applying  
AI to priority  
Public Health  
areas

# Phase I - Initial Foundations of AI for Public Health

## Artificial Intelligence for Public Health - AI Training Modules



AI learning  
pathway

1



Introduction to  
AI in Public  
Health

2



Interactive  
questions for  
self reflection

3



AI prompt  
design for  
public health

4



AI Tools

Introduction to  
generative  
AI Tools

5



Official  
Mandates and  
Publications

6

PAHO Digital Literacy Program

PAHO





## Artificial Intelligence for Public Health - AI Training Modules



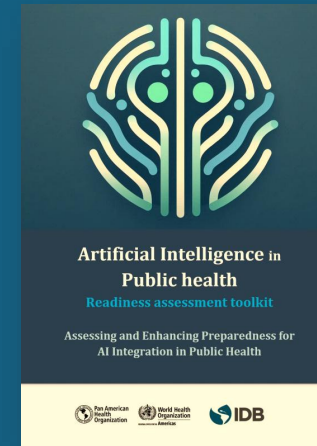
AI current  
trends and  
facts

7



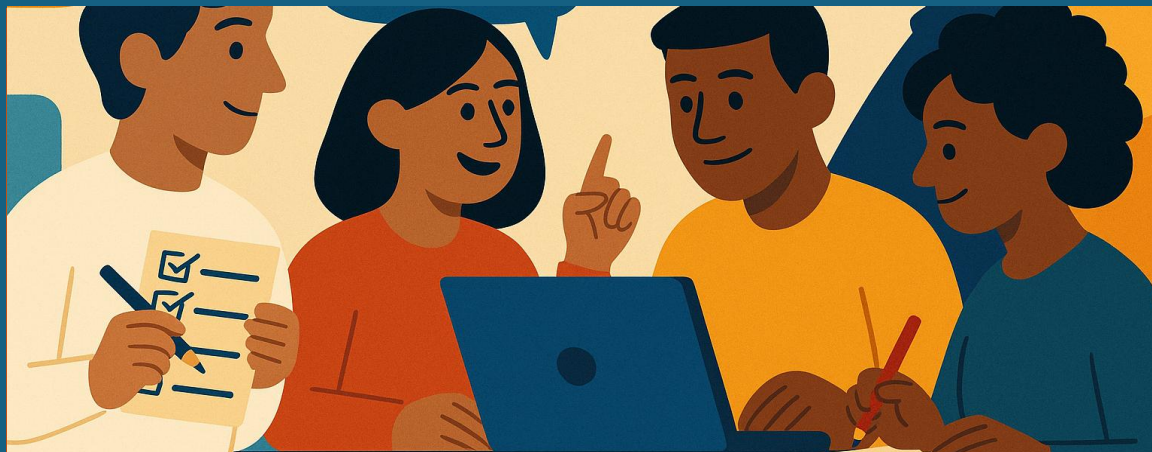
AI for effective  
negotiations in  
public health

8



AI in Public  
Health  
Readiness  
assessment

9



Quiz and Self  
Assessment Tool

10



Recommended  
reading

11

## PAHO Digital Literacy Program

PAHO



Pan American  
Health  
Organization



World Health  
Organization  
Americas Region





## AI learning pathway

1

This opening module sets the stage for the entire learning pathway. Participants will learn the objectives, expected outcomes, and structure of the training, ensuring everyone shares a common understanding from the start.



## Introduction to AI in Public Health

2

A foundational overview of AI's journey, from its origins to its application in modern public health. This module introduces key concepts and highlights real-world examples relevant to public health.





## Interactive questions for self reflection

3

This opening session is designed to energize participants, inspire curiosity, and set the tone for the pathway. Through interactive questions and group activities, we'll connect ideas, share perspectives, and explore initial thoughts about artificial intelligence in public health.



## AI prompt design for public health

4

An interactive session on crafting effective AI prompts to generate relevant, accurate, and context-sensitive outputs for public health tasks. Includes hands-on examples to improve results.



A guided exploration of practical AI tools that can support public health work. Participants will discover different categories of tools, their main functions, and tips for effective use.



## Official Mandates and Publications

6

A guided overview of PAHO's official mandates and publications that include actions and indicators dedicated to Artificial Intelligence within the broader context of the digital transformation of the health sector.

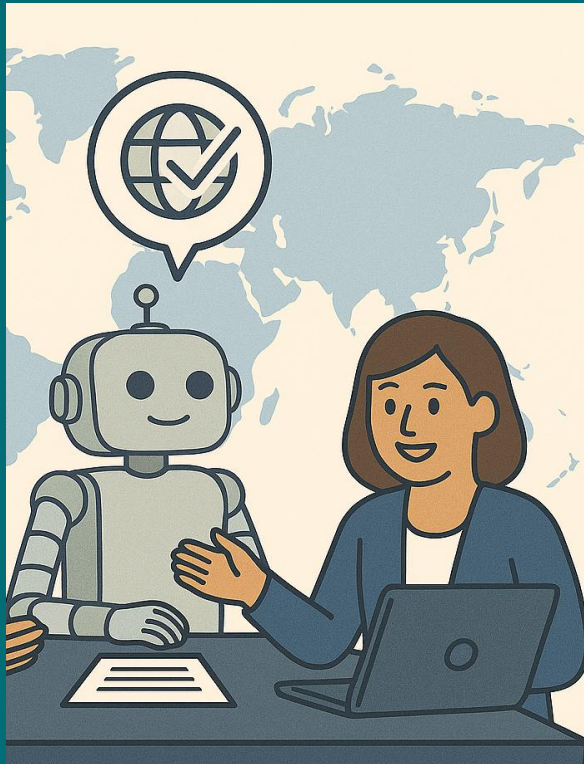


## AI current trends and facts

7

A snapshot of key facts on Artificial Intelligence, highlighting its rapid evolution and current impact on public health. Participants will learn about adoption trends, investment levels, incidents, evidence of effectiveness, and the most common use cases across health systems.





## AI for effective negotiations in public health

8

A practical look at how artificial intelligence can support negotiation processes in public health. Participants will explore how AI can analyze large volumes of information, identify common ground, and suggest balanced language that helps build consensus.



## Artificial Intelligence in Public health

### Readiness assessment toolkit

Assessing and Enhancing Preparedness for  
AI Integration in Public Health

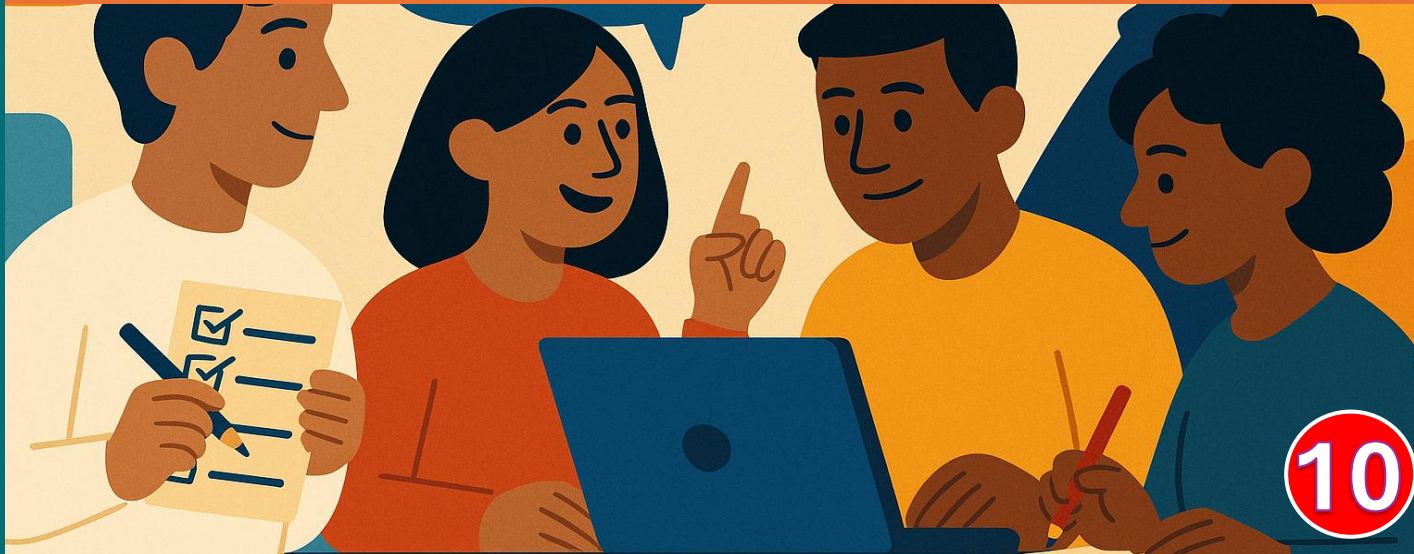


# AI in Public health Readiness assessment



The “Artificial Intelligence in Public Health: Readiness Assessment Toolkit” is a structured guide designed to evaluate and enhance a country’s preparedness for AI integration into public health systems.

## Workshop final Quiz and Self Assessment Tool



This module closes the workshop with a final quiz and self-assessment tool, allowing participants to consolidate their knowledge, identify strengths and gaps.



## Recommended reading

11

Participants will gain access to carefully selected resources that expand their understanding of AI in public health and support continued learning beyond the workshop.



*In the digital age, where technology evolves by the minute, continuous training is no longer optional, it is essential for staying relevant, effective, and prepared to meet today's public health challenges.*



# Phase II - Advanced

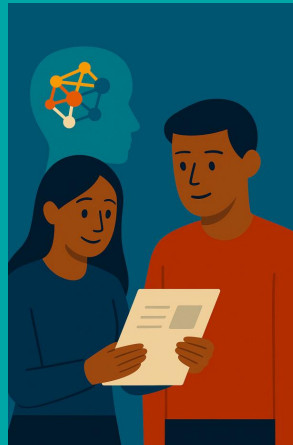
## Mastering AI for Public Health Impact

## Artificial Intelligence for Public Health - AI Training Modules



**Practical Steps  
for Implementing  
AI in Public  
Health Projects**

**A1**



**From Theory to  
Practice: AI  
Concepts for  
Public Health**

**A2**



**Harnessing AI:  
Deep Search and  
Agent Modes**

**A3**



**AI for Data  
Governance  
and Ethics**

**A4**



**Generative AI for  
Health  
Communication and  
Behavior Change**

**A5**



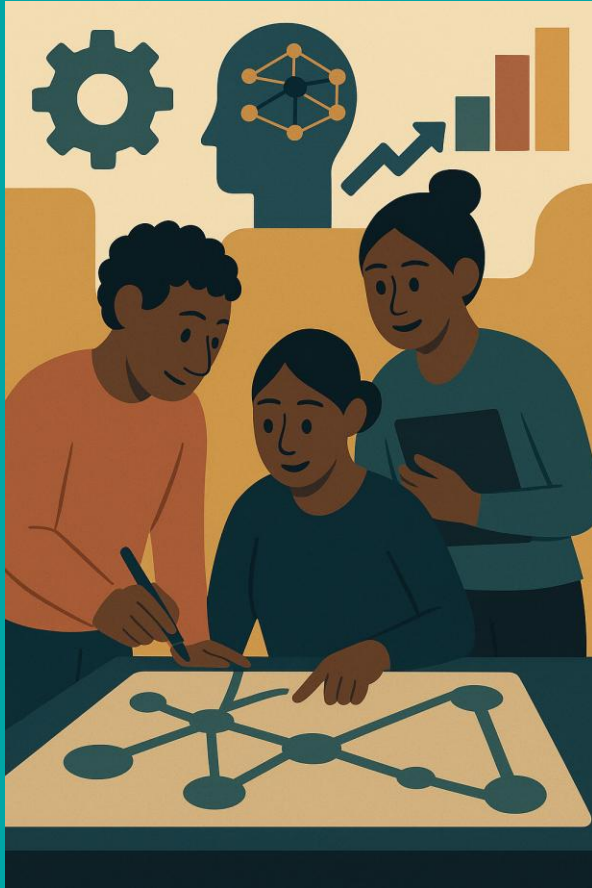
**Recommended  
reading**

**A6**

## PAHO Digital Literacy Program

**PAHO**





## Practical Steps for Implementing AI in Public Health Projects

A1

This module takes participants from AI concept to execution in public health, emphasizing national priorities, ethics, data readiness, and sustainability.



## From Theory to Practice: AI Concepts for Public Health

This module unpacks the foundational concepts of artificial intelligence and bridges them with practical public health applications. Participants will explore how AI can generate measurable health impact and inform better decisions.



This module introduces advanced AI capabilities for research and task automation. Participants will learn how deep search and agent modes can accelerate evidence gathering and provide dynamic assistance in managing large volumes of information.





## AI for Data Governance and Ethics

A4

This module emphasizes the responsible and ethical integration of AI in public health. Participants will analyze principles of fairness, accountability, transparency, and data protection.



## Generative AI for Health Communication and Behavior Change

A5

This module explores how generative AI can be applied to health communication strategies, from drafting culturally sensitive messages to supporting awareness campaigns.



## Recommended reading

Participants will gain access to carefully selected resources that expand their understanding of AI in public health and support continued learning beyond the workshop.



*AI has the power to transform public health by breaking down long-standing barriers, expanding and improving access, and delivering solutions where they were once out of reach.*

# Phase III - Specializations

Specialized modules applying AI to  
priority public health areas and  
challenges



## Artificial Intelligence for Public Health - AI Training Modules



AI for  
Epidemiological  
Surveillance

S1



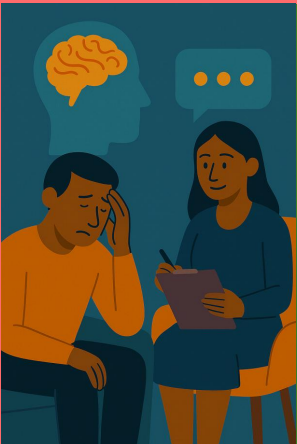
AI for HIV  
Prevention and  
Control

S2



AI for Non-  
communicable  
Diseases  
(NCDs)

S3



AI for Mental  
Health

S4



AI Cases in  
Public Health

S5



Recommended  
reading

S6

## PAHO Digital Literacy Program

PAHO





## AI for Epidemiological Surveillance

S1

This module explores how AI strengthens disease surveillance systems by detecting patterns, predicting outbreaks, and enhancing response capabilities.



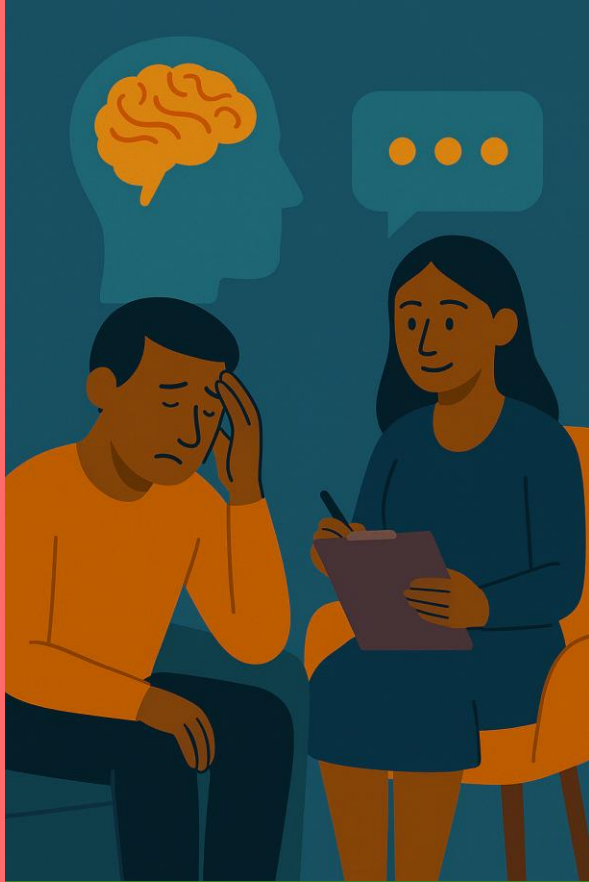
## AI for HIV Prevention and Control

S2

This module examines the role of AI in advancing HIV prevention and management. Participants will review tools that support early diagnosis, optimize treatment adherence, and improve population-level monitoring.



This module highlights AI applications in tackling NCDs through early detection, risk prediction, and personalized interventions. Participants will explore practical examples of AI use to address this growing public health burden.



## AI for Mental Health

S4

This module introduces AI-driven tools that can support mental health care, from chatbots and speech analytics to predictive systems that identify risks and trends.

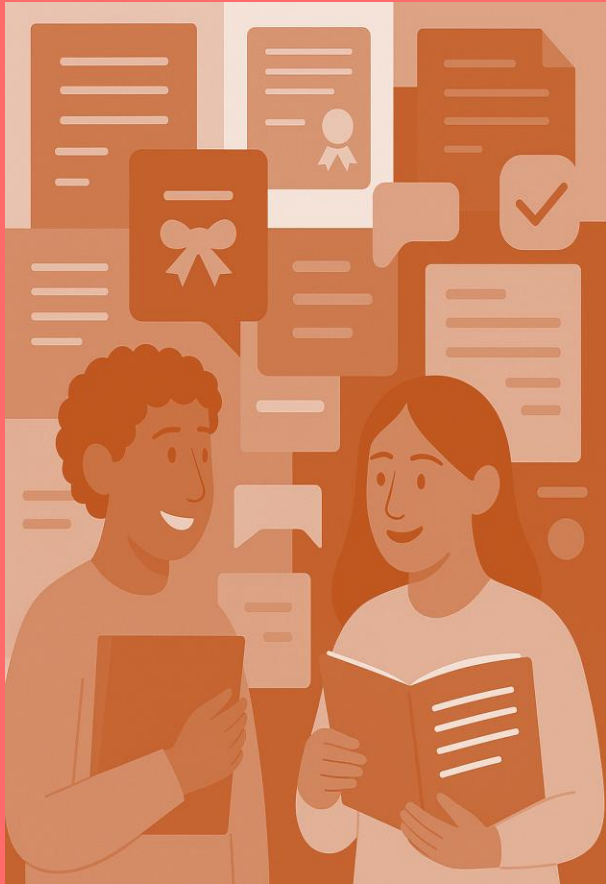




## AI Cases in Public Health

S5

This module showcases successful AI implementations in public health across different countries and contexts. Participants will reflect on lessons learned and recommendations that can guide the responsible adoption and scaling of AI initiatives.



## Recommended reading

S6

Participants will gain access to carefully selected resources that expand their understanding of AI in public health and support continued learning beyond the workshop.



*Join a growing community of health workers advancing digital transformation. Your participation matters: learn today, apply tomorrow, and make impact in your work.*

# Artificial Intelligence for Public Health

## 2026 AI Training Program

*Strengthening Information Systems for Health and paving the way  
toward the Pan American Highway for Digital Health.*

Registration



[Link](#)

**PAHO**

