



Prevent defect endoscopes entering the OR !!

ScopeControl®

J.C. Teding van Berkhout
Manager Sales

LSH Sector Brazil June 14, 2016



Quality Assurance of rigid endoscopes with

ScopeControl®

Automated endoscope testing device

Problem identification:

10-20% of the endoscopes in use are not tight anymore, this means a potential infection risk for patients.

4-10% of the operations is delayed because of not having a clear picture on the monitor.

Till now there is no fast objective measurement method to check the quality of rigid endoscopes.

Problem identification:

What are the reference values of new endoscopes

What are the minimal requirements of endoscopes

What is the best sterilisation process

What is the best brand or type

What types last longer

Problem identification:

What are the reference values of new endoscopes

What are the minimal requirements of endoscopes

What is the best sterilisation process

What is the best brand or type

What types last longer

Answer:

HOSPITALS DON'T KNOW !!!!! DO THEY ???

Correlation between "efficiency" and "productivity" is not clear



Resulting in:

Irritation

Delay in the Operating Theatre

Hassle and discussions between SPD and OR

Not purchasing the best product

No proper checks on repairs

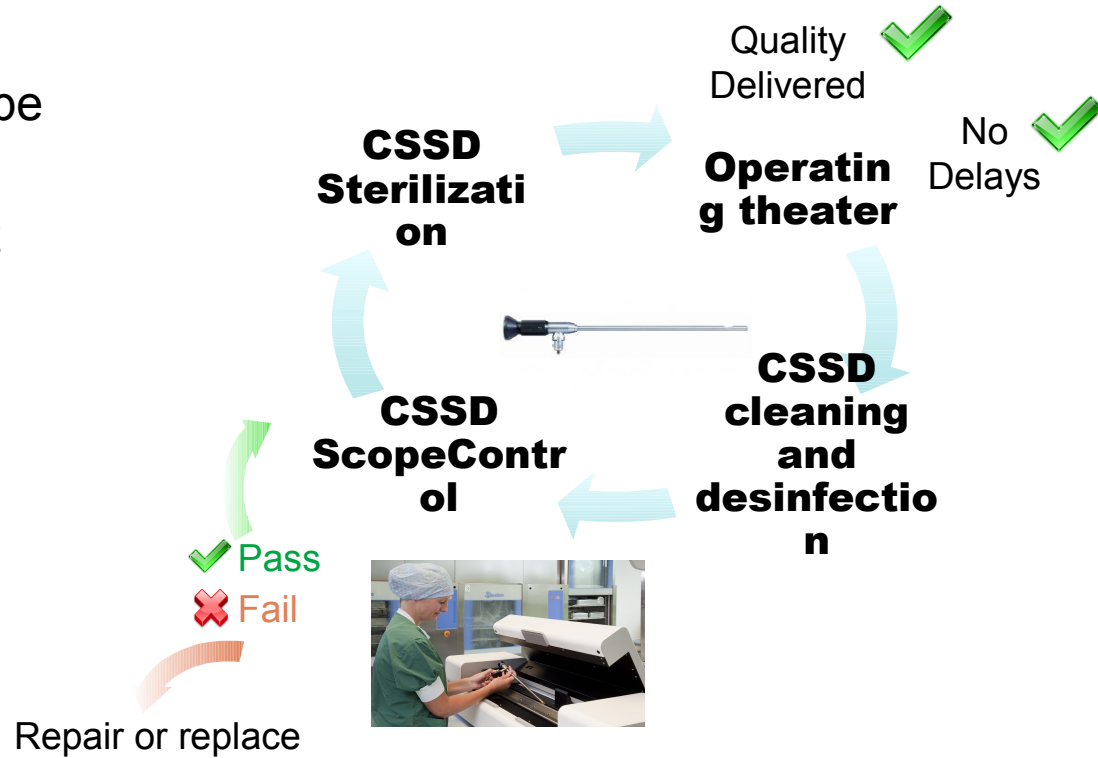
Visual inspection before sterilisation only



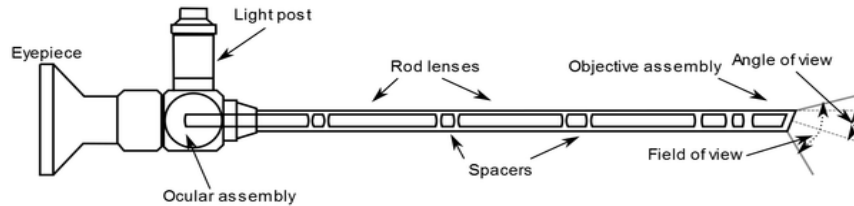
Endoscope Management Process

ScopeControl®

- Easy to use rigid endoscope testing device
- Manufacturer independent
- Tests for the 6 key causes of defects
- Integrated into the CSSD daily workflow
- 1-3 min test
- 15 min staff training



What does **ScopeControl** measure



VA

- View angle (VA)
- Field of view (FV)
- Focus (FC)



FV



FC



FB

- Light fibers (FB)
- Light transmission (LT)
- Colour correctness (CC)



LT

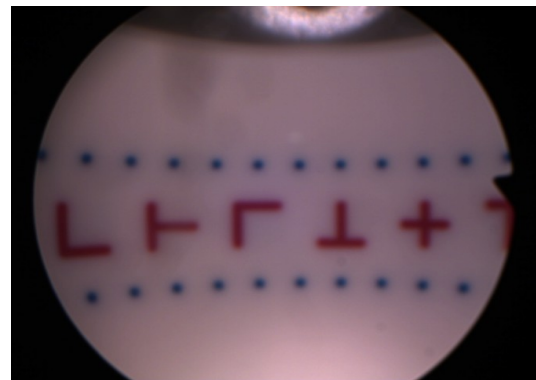
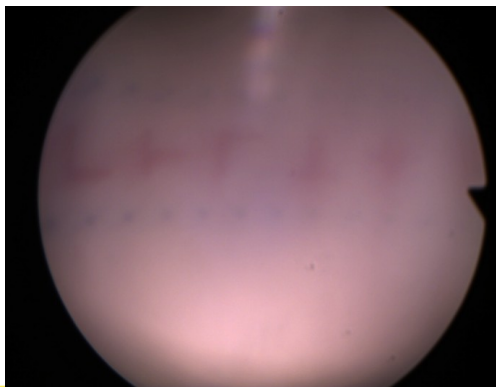
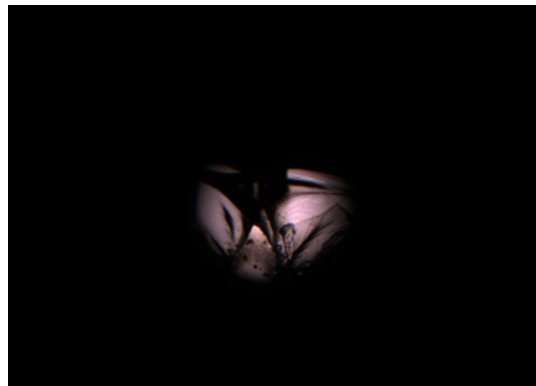
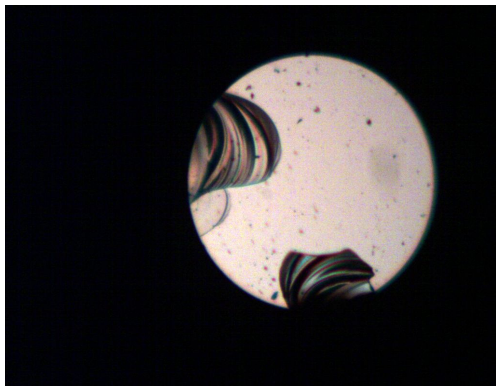


CC

Extra feature:

During the measurement, snap shots of dust, moisture, broken rod lenses of the endoscope are taken automatically and saved.

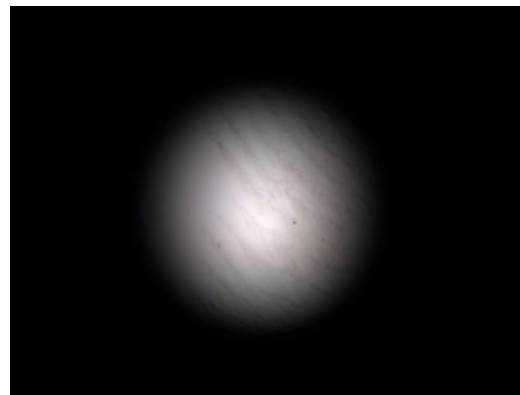
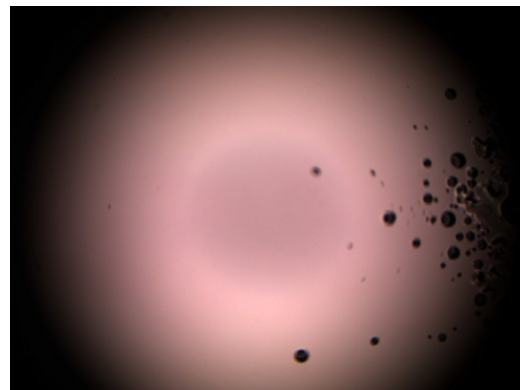
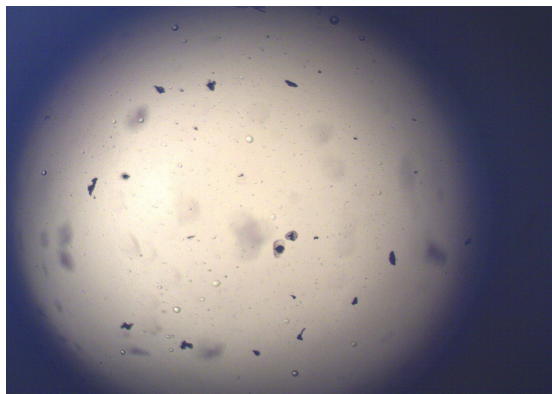
Snap-shot examples





DOVIDEQ
medical

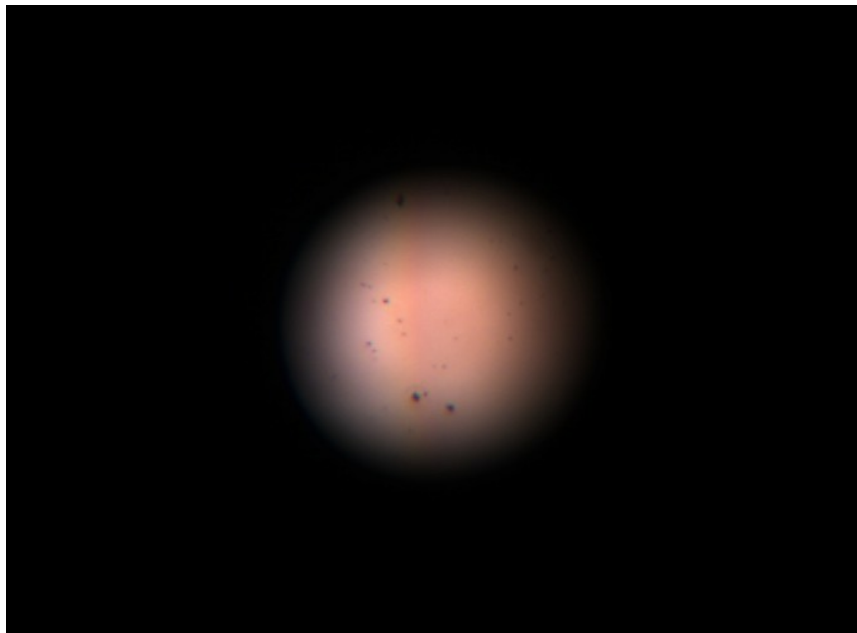
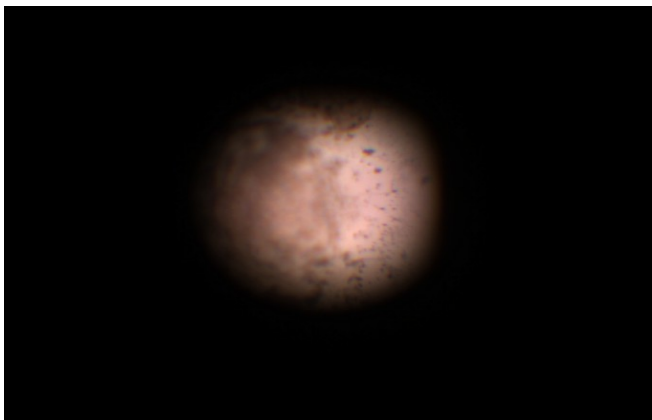
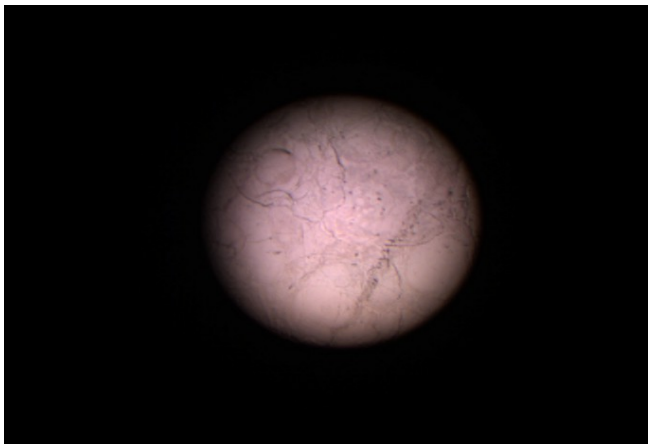
Snap-shot examples



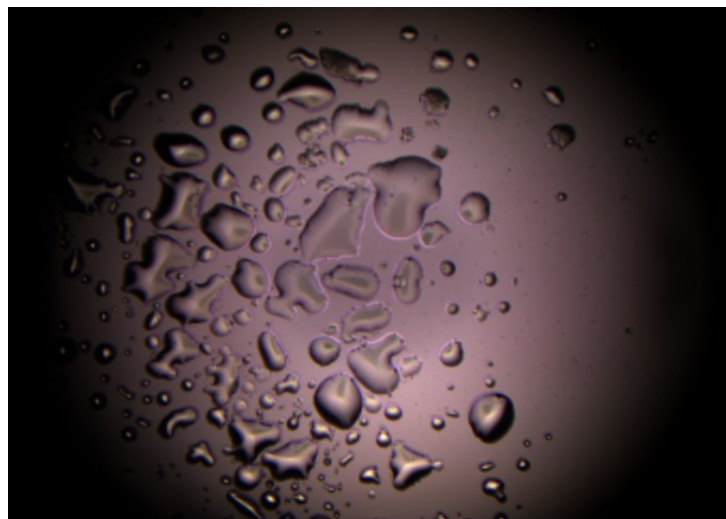


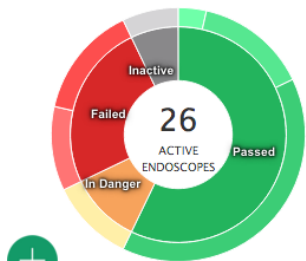
DOVIDEC
medical

Snap-shot examples



Snap-shot examples





Filter by brand:

Filter by category:

Filter by type:

Filter by date:

 From:

 To:

DOVIDEQ medical

PE 185A - B018222

Olympus

A22002A - 605467

WA53005A - 621400

A70940A - 663334

A70940A - 663338

A70940A - 663336

A22002A - 674769

WA53000A - 609573

Storz

26105 FA - 1498058

7230 AA - 1212677

7230 BA - 1537627

27005 BA - 1496033

28731 BWA - 12002X

26003 BA - 1810505

26003 AA - 1244853

10320 B - 1071430S

10324 A - 12086P

27005 BA - 1038203

28731 BWA - 1207KS

26003 BA - 1204PU

27005 CA - 1472004

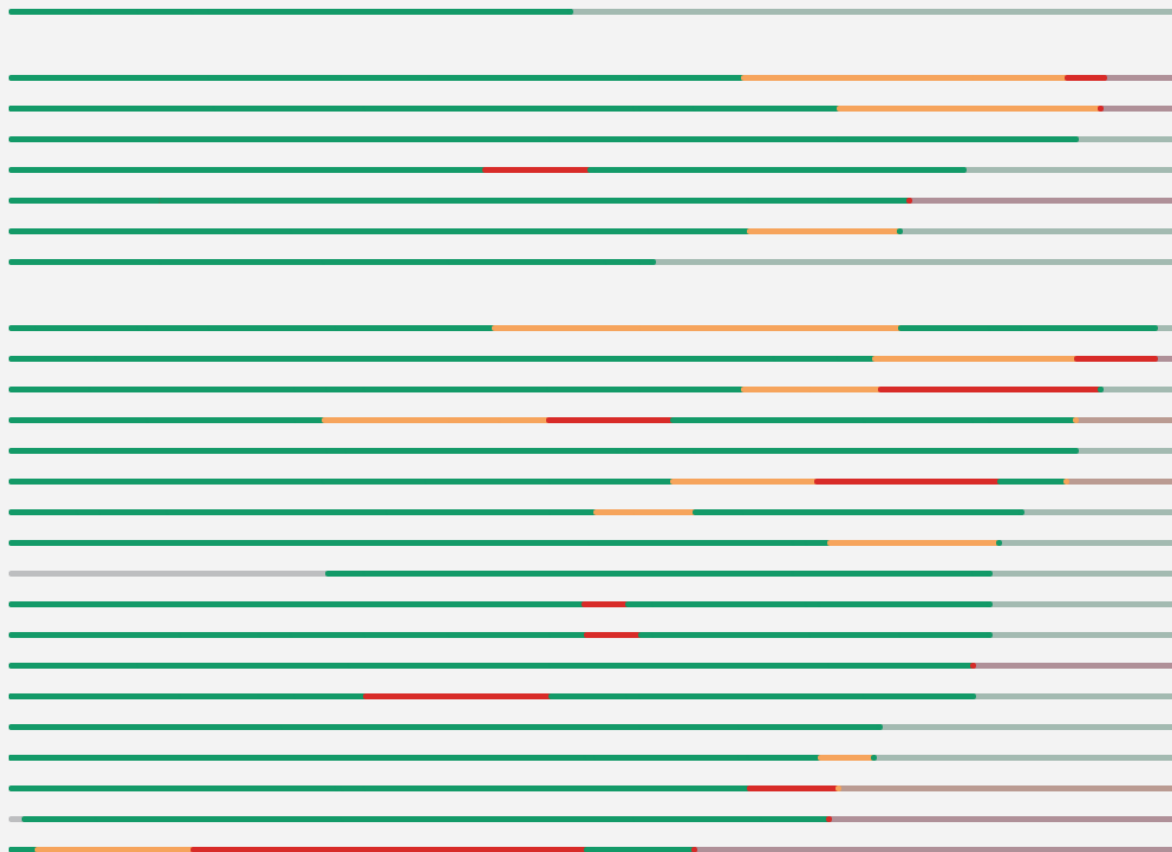
26003 AA - 120D9S

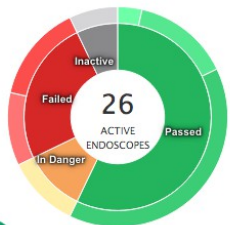
26105 BA - 1668945

26105 BA - 1203XG

1215 A - 1746976

27005 BA - 1496036





DOVIDEQ medical

PE 185A - B018222



Olympus

A22002A - 605467



WA53005A - 621400



A70940A - 663334



A70940A - 663338



A70940A - 663336



A22002A - 674769



WA53000A - 609573



Storz

26105 FA - 1498058



7230 AA - 1212677



7230 BA - 1537627



27005 BA - 1496033



28731 BWA - 12002X



26003 BA - 1810505



26003 AA - 1244853



10320 B - 1071430S



10324 A - 12086P



27005 BA - 1038203



28731 BWA - 1207KS



26003 BA - 1204PU



27005 CA - 1472004



26003 AA - 120D9S



26105 BA - 1668945



26105 BA - 1203XG



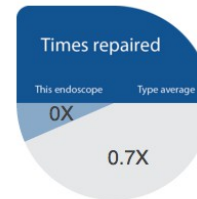
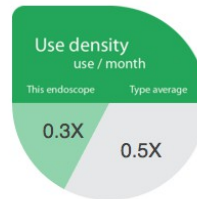
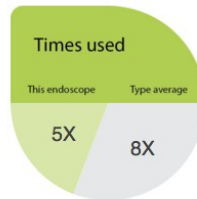
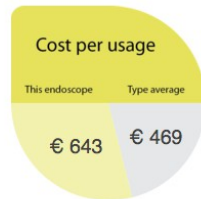
1215 A - 1746976



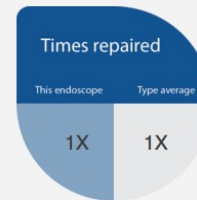
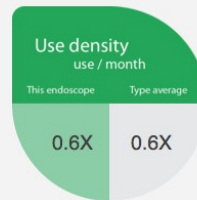
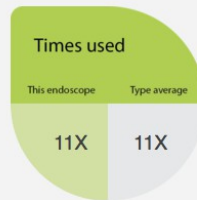
27005 BA - 1496036



Olympus A70940A - 663334 (Arthroscope)



Storz 7230 BA - 1537627 (Arthroscope)



Filter by brand:

Filter by category:

Filter by type:

Filter by date:

From:

To:

Apply

ScopeLINK Hospital



Pending Quotes



Available Quotes



Outgoing Transport










In Repair

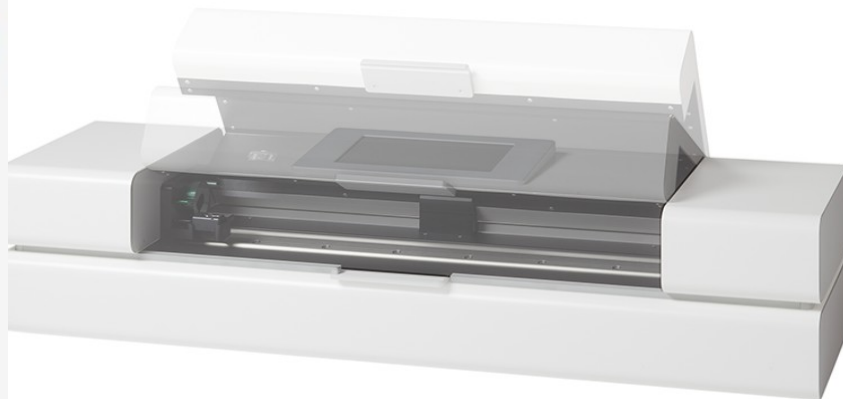


Incoming transport



Completed Quotes

<p>Olympus A22002A - 605467 Service Order 20151201</p> 	<p>View Details</p>	<p>Status: PENDING</p>
<p>Olympus A70940A - 663336 Service Order 20151001</p> 	<p>View Details</p>	<p>Status: AVAILABLE</p>
<p>Olympus WA53005A - 621400 Service Order 20151202</p> 	<p>View Details</p>	<p>Status: REVIEWED</p>
<p>Storz 26003 BA - 1204PU Service Order 20151101</p> 	<p>View Details</p>	<p>Status: OUTGOING TRANSPORT</p>
<p>Storz 1215 A - 1746976 Service Order 20150905</p> 	<p>View Details</p>	<p>Status: IN REPAIR</p>
<p>Storz 27005 BA - 1496036 Service Order 20150801</p> 	<p>View Details</p>	<p>Status: IN REPAIR</p>
<p>Storz 7230 AA - 1212677 Service Order 20160101</p> 	<p>View Details</p>	<p>Status: INCOMING TRANSPORT</p>



**Problem solved !
Check it out NOW !**